



PSB Producción Vegetal

BUFFAT'S GENETICS

APRICOT

NECTARINE

PEACH

FLAT PEACH & NECTARINE

PLUM

VARIETAL INNOVATION AND STONE FRUIT PRODUCTION

We are experts in **varietal innovation and stone fruit production**, with peaches, flat peaches, apricots and nectarines being the main varieties we work with. Moreover, we also produce new varieties such as the flat nectarine, the cherry, the plum and even the Cherry Plum.

Our work consists in: hybridization, selection, behaviour study, protection of our varieties, marketing and production.

Our research focuses on many criteria: **organoleptic quality of fruit**, colour, size, ripening time, as well as **disease resistance** (sharka, monilia, powdery mildew, xanthomonas, etc.), and adaptation to weather conditions, to the soil, etc.

Our strength: Being a hybrid breeder and producer. Thanks to this we know the limitations of producers, while the demands of the market allow us to search for and create adapted varieties from planting to distribution.



From April to September A taste of summer



INDEX

APRICOT	6	NECTAGOLD	30
BORSALINO-cov (TC11-170)	7	DAYTONA-cov (TN379-10)	31
MIKADO-cov (L8-4)	7	BN1003-5	31
NESTOR-cov (TJ68-37)	7	BN1002-25-cov	31
COLORADO-cov (435-15)	7	5889-120-cov	31
KOSMOS-cov (S17-7)	8	BLOOD NECTARINE	32
DOMINO-cov (S36-29)	8	DIABLOTINA-cov (DOR9-1)	33
FLOPRIA-cov (A35-109)	8	YELLOW FLESHED PEACH	34
LIDO-cov (2147-25)	8	FILOMENA-cov (T78-15)	35
L32-9-cov	9	ASTORIA-cov (B80-16)	35
KALAO-cov (2135-114)	9	POMPADOUR-cov (K202-6)	35
ARISTO-cov (A07-1-207)	9	LOLA-cov (292-8)	35
BALTAZAR-cov (TJ67-89)	9	ARTEMIS-cov (K184-48)	36
NELSON-cov (T56K-2)	10	CARLA-cov (B428-5)	36
MILORD-cov (2084-26)	10	PAMPANA-cov (K313-26)	36
OSCAR-cov (2141-1)	10	ARIZONA-cov (5683-7)	36
GASPAR-cov (LAR2174-73)	10	SOLEDORA-cov (5610-1)	37
MADRIGAL-cov (LAR2124-229)	11	LAMBADA-cov (HA688-8)	37
AGOSTINO-cov (LAR2164-65)	11	BUT12-10-2-cov	37
LAR2137-64-cov	11	WHITE FLESHED PEACH	38
RED APRICOT	12	AMANDINA-cov (T191-1)	39
TOTEM-cov (L21-133)	13	MARMARA-cov (5746-17)	39
FUEGO-cov (P52-106)	13	PAMELA-cov (B407-2)	39
CHEYENNE-cov (L21-18)	13	MAREVA-cov (K313-24)	39
CIRANO-cov (L21-72)	13	ALABAMA-cov (5888-25)	40
BOLERO-cov (HB278-104)	14	MELISSA-cov (HA693-1)	40
FAV11-30-cov	14	IBIZA-cov (4094-16)	40
FAV149-10-cov	14	BN984-6-cov	40
YELLOW FLESHED NECTARINE	16	'CLINGSTONE' PEACH	42
PATAGONIA-cov (T64-36)	17	ZN175-5-cov	42
FLARIBA-cov (N2-117)	17	PALOMBAGGIA-cov (HA167-2)	43
COPACABANA-cov (5709-11)	17	BORNEO-cov (HA163-56)	43
GARCIMA-cov (N2-88)	17	TN472-5-cov	43
IPANEMA-cov (5709-24)	18	TN473-9-cov	43
OMEGA-cov (5692-58)	18	YELLOW FLESHED FLAT PEACH	44
CARACAS-cov (5710-48)	18	KIWANI-cov (5607-6-cov)	45
GAROFAL-cov (N46-12)	18	DIVADONA-cov (5544-54)	45
GARTAIRO-cov (N46-28)	19	OSIRIS-cov (HA555-3)	45
NORACILA-cov (N46-9)	19	WHITE FLESHED FLAT PEACH	46
MOMBASA-cov (T344-2)	19	ZODIAC-cov (5607-5)	47
GARDETA-cov (N48-25)	19	SAMANTHA-cov (HA555-45)	47
ATANAIS-cov (5661-26)	20	CONTESSA-cov (HA544-18)	47
MATISS-cov (5661-56)	20	BABYLONE-cov (AC552-2)	47
LUCIANA-cov (N47-13)	20	NAYADE-cov (AC601-9)	48
CLARISS-cov (4052-22)	20	CYCLADE-cov (BP171-4)	48
SUCULENTE-cov (5785-3)	21	CARAMBA-cov (B426-5)	48
PENELOPE-cov (5549-25)	21	FILOE-cov (5927-3)	48
KINOLEA-cov (4052-15)	21	BP171-33-COV	49
BN1118-28-cov	21	YELLOW FLESHED FLAT NECTARINE	50
ESMERALDA-cov (4055-10)	22	AC459-25-cov	51
BN1024-5-cov	22	BP171-5-cov	51
WHITE FLESHED NECTARINE	24	WHITE FLESHED FLAT NECTARINE	52
DIAMENTINA-cov (5235-2)	25	LUISELLA-cov (5544-58)	52
FLAVELA-cov (N2-36)	25	TINTOSA-cov (CN239-49)	52
FLAVANA-cov (N2-24)	25	DIOSA-cov (BP171-22)	52
SAVORELLA-cov (5709-52)	25	RUBIMANIA-cov (CN368-6)	52
ALTAMIRA-cov (5710-50)	26	CANOPPE-cov (CN591-2)	53
BOREAL-cov (T333-31)	26	COOKIE-cov (CN592-12)	53
TN272-23-cov	26	PLUM	54
AMAPOLA-cov (5829-22)	26	APOLINA-cov (CR8-7)	55
GARCICA-cov R22 (N48-21)	27	PALLATINA-cov (K321-75)	55
D531-14-cov	27	CR45-4-cov	55
CALICOBA-cov (5635-31)	27		
BURMA-cov (5549-45)	27		
VAHINE-cov (5904-21)	28		
TIFANY-cov (4050-1)	28		
BUT-12-17-1-cov	28		
SIDONIA-cov (BN944-4)	28		

CALENDAR

APRICOT

- APRICOT
- RED APRICOT
- SELF-FERTILE
- SHARKA TOLLERANT

NECTARINE

- YELLOW FLESHED NECTARINE
- WHITE FLESHED NECTARINE
- NECTAGOLD
- BLOOD NECTARINE
- SUB-ACID

PEACH

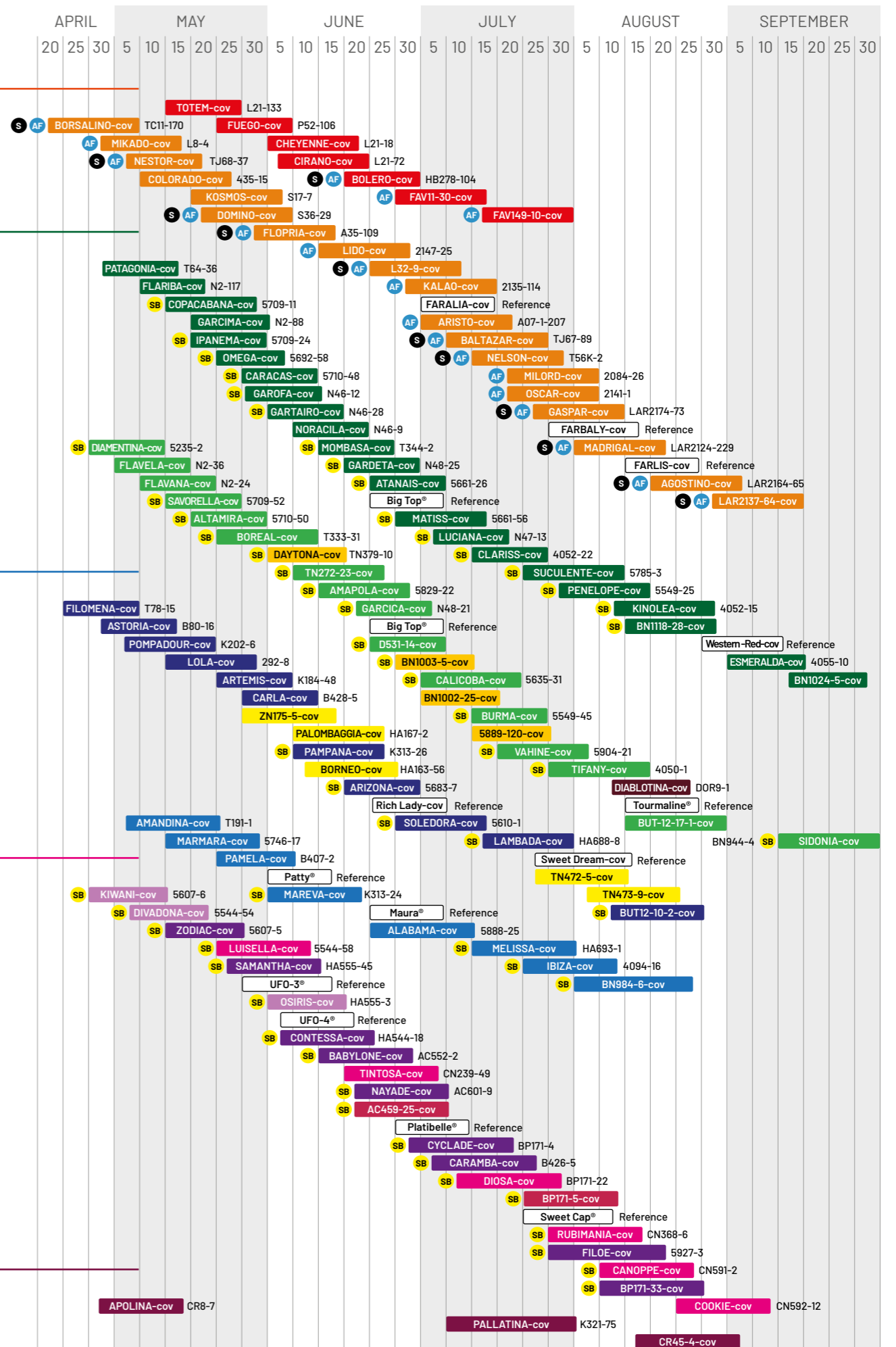
- YELLOW FLESHED PEACH
- WHITE FLESHED PEACH
- 'CLINGSTONE' PEACH
- SUB-ACID

FLAT PEACH & NECTARINE

- YELLOW FLESHED FLAT PEACH
- WHITE FLESHED FLAT PEACH
- YELLOW FLESHED FLAT NECTARINE
- WHITE FLESHED FLAT NECTARINE
- SUB-ACID

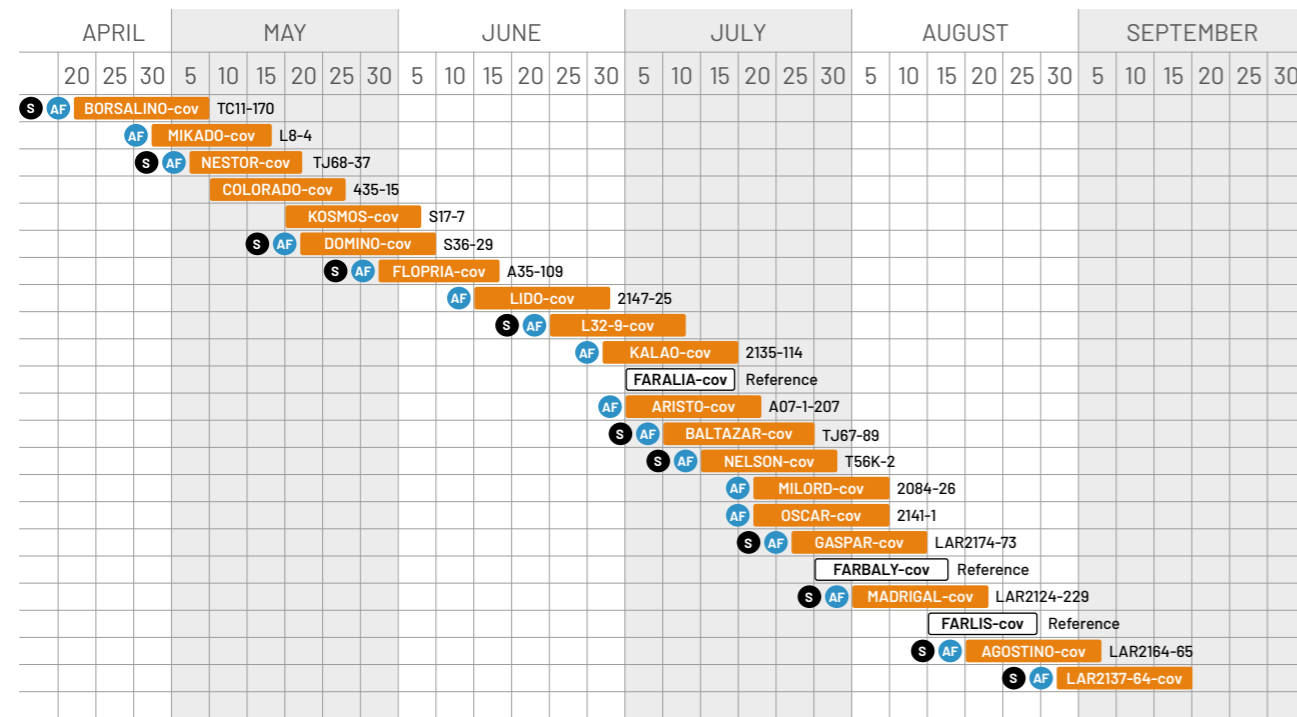
PLUM

- PLUM





APRICOT CALENDAR



AF SELF-FERTILE S SHARKA TOLLERANT



Apricot

BORSALINO-cov (TC11-170)



Breeder - Owner PSB Producción Vegetal
CPVO patent BORSALINO-cov CEE Nº 2020/2652

CHARACTERISTICS

Maturity Extra-early, -7 days Mikado-cov
Flowering time Extra-early, -20 days Mikado-cov
Bloom set Good
Production Good
Tree Medium vigor, half-open
Self-fertile Yes

FRUIT

Shape Round
Firmness Good
Cracking No
Skin colour Blush on orange background
Size A
Organoleptic qualities Good



MIKADO-cov (L8-4)



Breeder - Owner PSB Producción Vegetal
CPVO patent MIKADO-cov CEE Nº 2014/2511

CHARACTERISTICS

Maturity Extra-early, -5 days Colorado-cov
Flowering time Extra-early, -5 days Colorado-cov
Bloom set Very good
Production Very good
Tree Vigorous, half-open
Self-fertile Yes

FRUIT

Shape Round
Firmness Good
Cracking Low
Skin colour Red blush on light orange background
Size AA
Organoleptic qualities Good, balanced



NESTOR-cov (TJ68-37)



Breeder - Owner PSB Producción Vegetal
CPVO patent NESTOR-cov

CHARACTERISTICS

Maturity Extra-early, -5 days Colorado-cov
Flowering time Extra-early, Mogador-cov period
Bloom set Very good
Production Very good
Tree Vigorous, half-open
Self-fertile Yes

FRUIT

Shape Oblong
Firmness Good
Cracking No
Skin colour Red blush on orange background
Size A-AA
Organoleptic qualities Good, balanced



COLORADO-cov (435-15)

Breeder - Owner PSB Producción Vegetal
CPVO patent COLORADO-cov CEE Nº 2007/2979

CHARACTERISTICS

Maturity Extra-early, +5 days Mikado-cov
Flowering time Extra-early, +5 days Mikado-cov
Bloom set Very good
Production Very good
Tree Vigorous, half-straight
Self-fertile No, pollinators: Luca-cov, Kosmos-cov, Madison-cov, Totem-cov

FRUIT

Shape Round, oblong
Firmness Very good
Cracking No
Skin colour Red blush on orange background
Size AA-AAA
Organoleptic qualities Good, balanced



KOSMOS-cov (S17-7)

Breeder - Owner PSB Producción Vegetal
CPVO patent KOSMOS-cov CEE N° 2016/2615

CHARACTERISTICS

Maturity Early, +8 days Colorado-cov
Flowering time Extra-early, Colorado-cov period
Bloom set Very good
Production Very good
Tree Vigorous, half-straight
Self-fertile No, pollinators: Totem-cov, Mikado-cov, Colorado-cov

FRUIT

Shape Elongated
Firmness Very good
Cracking Low
Skin colour Red blush on orange background
Size AA-AAA
Organoleptic qualities Good, balanced



DOMINO-cov (S36-29)

Breeder - Owner PSB Producción Vegetal
CPVO patent DOMINO-cov CEE N° 2016/2614

CHARACTERISTICS

Maturity Early, -5 days Flopria-cov
Flowering time Early, -5 days Flopria-cov
Bloom set Very good
Production Very good
Tree Vigorous, half-open
Self-fertile Yes

FRUIT

Shape Round, oblong
Firmness Very good
Cracking Low
Skin colour Red blush on orange background, attractive
Size AA
Organoleptic qualities Good, balanced



FLOPRIA-cov (A35-109)

Breeder - Owner PSB Producción Vegetal
CPVO patent FLOPRIA-cov CEE N° 2004/2505

CHARACTERISTICS

Maturity Half-early, Bulida period
Flowering time Seasonal, Bulida period
Bloom set Very good (thinning in blooming time)
Production Very good
Tree Vigorous, half-straight
Self-fertile Yes

FRUIT

Shape Round, oblong
Firmness Very good
Cracking No
Skin colour Red blush on orange background
Size AA
Organoleptic qualities Good, balanced



LIDO-cov (2147-25)

Breeder - Owner PSB Producción Vegetal
CPVO patent LIDO-cov CEE N° 2012/2222

CHARACTERISTICS

Maturity Half-early, +10 days Flopria-cov
Flowering time Late, +20 days Flopria-cov
Bloom set Very good
Production Very good
Tree Vigorous, half-open
Self-fertile Yes

FRUIT

Shape Oblong
Firmness Very good
Cracking No
Skin colour Intensive red blush on orange background
Size AA
Organoleptic qualities Very good, sweet, aromatic



L32-9-cov

Breeder - Owner PSB Producción Vegetal
CPVO patent L32-9-cov

CHARACTERISTICS

Maturity Seasonal, -5 days Lady Cot-cov
Flowering time Seasonal, +10 days Flopria-cov
Bloom set Very good
Production Very good
Tree Vigorous, half-open
Self-fertile Yes

FRUIT

Shape Round
Firmness Good
Cracking No
Skin colour Red blush on orange background
Size AA-AAA
Organoleptic qualities Very good, sweet



KALAO-cov (2135-114)

Breeder - Owner PSB Producción Vegetal
CPVO patent KALAO-cov CEE N° 2014/2508

CHARACTERISTICS

Maturity Seasonal, +5 days Bergeron
Flowering time Late, +20 days Flopria-cov
Bloom set Very good
Production Very good
Tree Vigorous, half-open
Self-fertile Yes

FRUIT

Shape Round, oblong
Firmness Very good
Cracking Low
Skin colour Red blush on orange background
Size AA-AAA
Organoleptic qualities Very good, sweet and juicy



ARISTO-cov (A07-1-207)

Breeder - Owner PSB Producción Vegetal
CPVO patent ARISTO-cov CEE N° 2016/2618

CHARACTERISTICS

Maturity Late, Faralia-cov period
Flowering time Late, Lido-cov period
Bloom set Very good
Production Very good
Tree Vigorous, half-open
Self-fertile Yes

FRUIT

Shape Round, oblong
Firmness Very good
Cracking No
Skin colour Intense red blush on orange background
Size A-AA
Organoleptic qualities Very good, sweet



BALTAZAR-cov (TJ67-89)

Breeder - Owner PSB Producción Vegetal
CPVO patent BALTAZAR-cov CEE N° 2021/2713

CHARACTERISTICS

Maturity Late, +5 days Aristo-cov
Flowering time Seasonal, Flopria-cov period
Bloom set Very good
Production Very good
Tree Vigorous, half-open
Self-fertile Yes

FRUIT

Shape Round-oblong
Firmness Very good
Cracking No
Skin colour Very bright red blush on intense orange background
Size AA
Organoleptic qualities Very good, sweet, aromatic



NELSON-cov (T56K-2)

Breeder - Owner PSB Producción Vegetal
CPVO patent NELSON-cov CEE N° 2016/2619

CHARACTERISTICS

Maturity Late, -8 days Farbaly-cov
Flowering time Seasonal, +10 days Flopria-cov
Bloom set Very good
Production Very good
Tree Vigorous, half-open
Self-fertile Yes

FRUIT

Shape Elongated, flat
Firmness Very good
Cracking Low
Skin colour Red blush on intense orange background
Size AA-AAA
Organoleptic qualities Very good, sweet

**MILORD-cov** (2084-26)

Breeder - Owner PSB Producción Vegetal
CPVO patent MILORD-cov CEE N° 2010/2755

CHARACTERISTICS

Maturity Late, -5 days Farbaly-cov
Flowering time Seasonal, +10 days Flopria-cov
Bloom set Very good
Production Very good
Tree Vigorous, half-open
Self-fertile Yes

FRUIT

Shape Oblong, flat
Firmness Very good
Cracking No
Skin colour Red blush on orange background
Size AA-AAA
Organoleptic qualities Good

**OSCAR-cov** (2141-1)

Breeder - Owner PSB Producción Vegetal
CPVO patent OSCAR-cov CEE N° 2012/2224

CHARACTERISTICS

Maturity Late, -5 days Farbaly-cov
Flowering time Seasonal, Milord-cov period
Bloom set Very good (thinning in blooming time)
Production Very good
Tree Vigorous, half-open
Self-fertile Yes

FRUIT

Shape Round
Firmness Very good
Cracking Low
Skin colour Red blush on orange background
Size AA
Organoleptic qualities Very good, sweet, aromatic

**GASPAR-cov** (LAR2174-73)

NEW

Breeder - Owner PSB Producción Vegetal
CPVO patent GASPAR-cov CEE N° 2021/2714

CHARACTERISTICS

Maturity Late, +10 days Milord-cov
Flowering time Seasonal, Milord-cov period
Bloom set Very good
Production Very good
Tree Vigorous, half-open
Self-fertile Yes

FRUIT

Shape Round
Firmness Very good
Cracking No
Skin colour Red blush on intense orange background
Size AA
Organoleptic qualities Very good, sweet, juicy and aromatic

**MADRIGAL-cov** (LAR2124-229)

Breeder - Owner PSB Producción Vegetal
CPVO patent MADRIGAL-cov

CHARACTERISTICS

Maturity Late, +8 days Farbaly-cov
Flowering time Seasonal, +5 days Milord-cov
Bloom set Very good
Production Very good
Tree Vigorous, half-open
Self-fertile Yes

FRUIT

Shape Oblong
Firmness Very good
Cracking No
Skin colour Red blush on orange background
Size AA-AAA
Organoleptic qualities Very good, sweet, aromatic

**AGOSTINO-cov** (LAR2164-65)

Breeder - Owner PSB Producción Vegetal
CPVO patent AGOSTINO-cov CEE N° 2018/2668

CHARACTERISTICS

Maturity Extra-late, +10 days Faris-cov
Flowering time Seasonal, Milord-cov period
Bloom set Very good
Production Very good
Tree Vigorous, half-open
Self-fertile Yes

FRUIT

Shape Oblong
Firmness Very good
Cracking No
Skin colour Red blush on intense orange background
Size AA
Organoleptic qualities Very good, sweet, juicy and aromatic

**LAR2137-64-cov**

NEW

Breeder - Owner PSB Producción Vegetal
CPVO patent LAR2137-64-cov

CHARACTERISTICS

Maturity Extra-late, +10 days Agustino-cov
Flowering time Late, Lido-cov period
Bloom set Very good
Production Very good
Tree Medium vigor, half-open
Self-fertile Yes

FRUIT

Shape Elongated
Firmness Very good
Cracking No
Skin colour Orange without blush
Size AA
Organoleptic qualities Good



BOLERO-cov (HB278-104)



Breeder - Owner PSB Producción Vegetal
CPVO patent BOLERO-cov CEE N° 2016/2617

CHARACTERISTICS

Maturity Seasonal, +15 days Flopria-cov
Flowering time Seasonal, +7 days Flopria-cov
Bloom set Very good
Production Very good
Tree Vigorous, half-straight
Self-fertile Yes

FRUIT

Shape Oblong, elongated
Firmness Good
Cracking No
Skin colour Red
Size AA-AAA
Organoleptic qualities Very good, sweet, aromatic



FAV11-30-cov



Breeder - Owner PSB Producción Vegetal
CPVO patent FAV11-30-cov

CHARACTERISTICS

Maturity Seasonal, +10 days Bolero-cov
Flowering time Seasonal, Milord-cov period
Bloom set Very good
Production Very good
Tree Good vigor, half-straight
Self-fertile Yes

FRUIT

Shape Elongated
Firmness Very good
Cracking Low
Skin colour Intense red
Size AA
Organoleptic qualities Very good, sweet, aromatic



FAV149-10-cov



Breeder - Owner PSB Producción Vegetal
CPVO patent FAV149-10-cov

CHARACTERISTICS

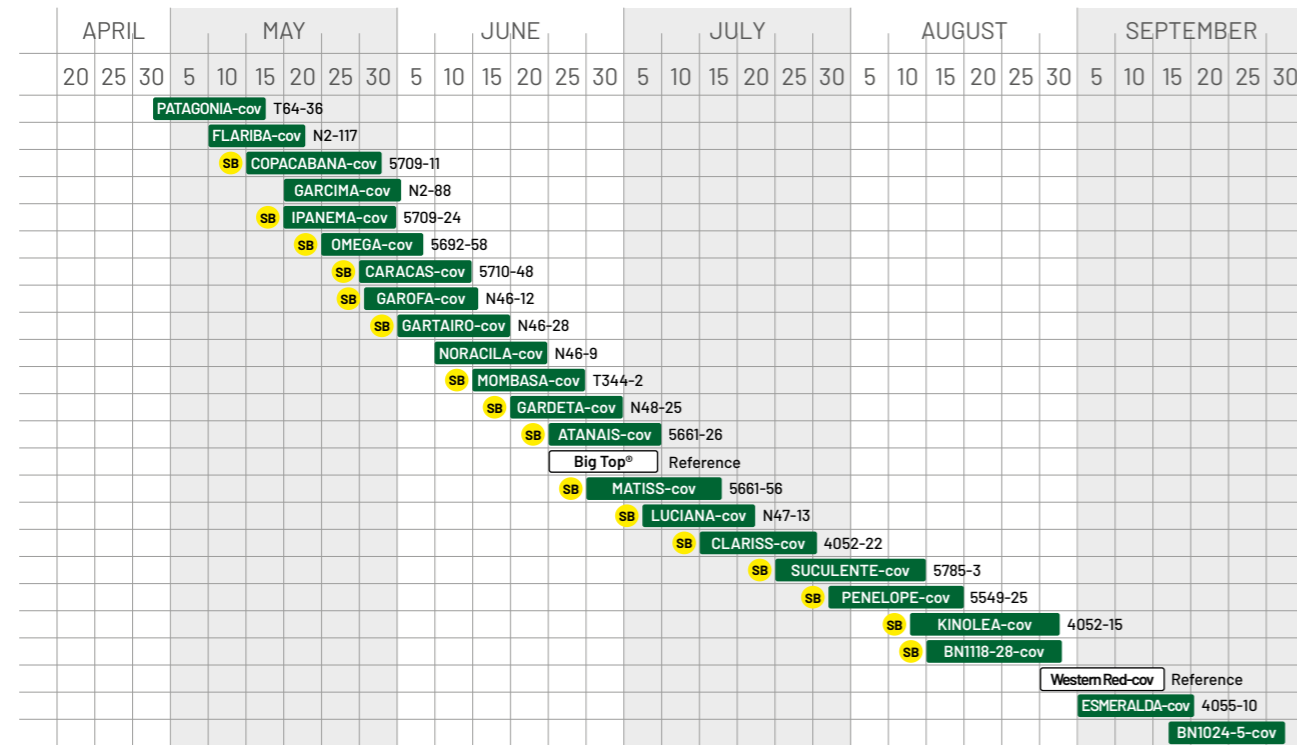
Maturity Late, Milord-cov period
Flowering time Seasonal, Lido period
Bloom set Very good
Production Very good
Tree Good vigor, half-straight
Self-fertile Yes

FRUIT

Shape Elongated
Firmness Very good
Cracking Low
Skin colour Intense red
Size AA
Organoleptic qualities Very good, sweet, aromatic



YELLOW FLESHED NECTARINE CALENDAR



SB SUB-ACID



Yellow fleshed nectarine

PSB Producción Vegetal

PATAGONIA-cov (T64-36)

Breeder - Owner PSB Producción Vegetal
CPVO patent PATAGONIA-cov CEE N° 2013/3049

CHARACTERISTICS

Maturity Extra-early, -5 days Flariba-cov
Flowering time Extra-early, -5 days Flariba-cov
Bloom set High
Production Very good
Tree Vigorous, half-open

FRUIT

Shape Round, flat
Firmness Good
Cracking No
Skin colour Bright red, no sugar spots
Size B-A
Organoleptic qualities Good, balanced



FLARIBA-cov (N2-117)

Breeder - Owner PSB Producción Vegetal
CPVO patent FLARIBA-cov CEE N° 2004/2496

CHARACTERISTICS

Maturity Extra-early, -20 days Garofo-cov
Flowering time Extra-early, -15 days Garofo-cov
Bloom set Elevated
Production Very good
Tree Vigorous, half-open

FRUIT

Shape Round
Firmness Good
Cracking No
Skin colour Uniform red
Size B-A
Organoleptic qualities Good, balanced



COPACABANA-cov (5709-11) SB

Breeder - Owner PSB Producción Vegetal
CPVO patent COPACABANA-cov CEE N° 2017/2609

CHARACTERISTICS

Maturity Early, -15 days Garofo-cov
Flowering time Extra-early, -10 days Garofo-cov
Bloom set Very good
Production Very good
Tree Vigorous, half-open

FRUIT

Shape Round
Firmness Very good
Cracking No
Skin colour 100 % dark red
Size A
Organoleptic qualities Very good, sub-acid



GARCIMA-cov (N2-88)

Breeder - Owner PSB Producción Vegetal
CPVO patent GARCIMA-cov CEE N° 2003/1888

CHARACTERISTICS

Maturity Early, +5 days Flariba-cov
Flowering time Extra-early, -5 days Flariba-cov
Bloom set Good
Production Very good
Tree Vigorous, half-open

FRUIT

Shape Round, tipless
Firmness Very good
Cracking No
Skin colour Intense red
Size A-AA
Organoleptic qualities Good, balanced



//NECTARINE

IPANEMA-cov (5709-24)

SB

Breeder - Owner PSB Producción Vegetal
CPVO patent IPANEMA-cov CEE N° 2017/2610

CHARACTERISTICS

Maturity Early, -10 days Garofa-cov
Flowering time Early, -10 days Garofa-cov
Bloom set Very good
Production Very good
Tree Vigorous, half-open

FRUIT

Shape Round
Firmness Very good
Cracking No
Skin colour 100 % dark red
Size A
Organoleptic qualities Very good, sub-acid

**OMEGA-cov** (5692-58)

SB

Breeder - Owner PSB Producción Vegetal
CPVO patent OMEGA-cov CEE N° 2018/2724

CHARACTERISTICS

Maturity Early, -5 days Garofa-cov
Flowering time Early, +5 days Garofa-cov
Bloom set Very good
Production Very good
Tree Vigorous, half-open

FRUIT

Shape Round, flat
Firmness Very good
Cracking No
Skin colour 100 % dark red
Size A
Organoleptic qualities Very good, sub-acid

**GARTAIRO-cov** (N46-28)

SB

Breeder - Owner PSB Producción Vegetal
CPVO patent GARTAIRO-cov CEE N° 2003/1883

CHARACTERISTICS

Maturity Seasonal, +5 days Garofa-cov
Flowering time Early, +5 days Garofa-cov
Bloom set Good
Production Very good
Tree Vigorous, half-open

FRUIT

Shape Round, elongated
Firmness Very good
Cracking No
Skin colour Dark red
Size A-AA
Organoleptic qualities Very good, sweet, sub-acid

**NORACILA-cov** (N46-9)

Breeder - Owner PSB Producción Vegetal
CPVO patent NORACILA-cov CEE N° 2007/0093

CHARACTERISTICS

Maturity +5 days Garofa-cov
Flowering time +5 days Garofa-cov
Bloom set Good
Production Very good
Tree Vigorous, half-open

FRUIT

Shape Round, elongated
Firmness Very good
Cracking No
Skin colour Bright red
Size A-AA
Organoleptic qualities Very good, sweet, sub-acid

**CARACAS-cov** (5710-48)

SB

Breeder - Owner PSB Producción Vegetal
CPVO patent CARACAS-cov CEE N° 2017/2611

CHARACTERISTICS

Maturity Early, Garofa-cov period
Flowering time Early, -5 days Garofa-cov
Bloom set Very good
Production Very good
Tree Vigorous, half-open

FRUIT

Shape Round
Firmness Very good
Cracking No
Skin colour 100 % dark red with sugar spots
Size A-AA
Organoleptic qualities Very good, sub-acid

**GAROFA-cov** (N46-12)

SB

Breeder - Owner PSB Producción Vegetal
CPVO patent GAROFA-cov CEE N° 2003/1892

CHARACTERISTICS

Maturity -15 days Big Top®
Flowering time -10 days Big Top®
Bloom set Elevated
Production Very good
Tree Vigorous, half-open

FRUIT

Shape Round, elongated
Firmness Very good
Cracking No
Skin colour Red
Size A-AA
Organoleptic qualities Good, sweet, sub-acid

**MOMBASA-cov** (T344-2)

SB

Breeder - Owner PSB Producción Vegetal
CPVO patent MOMBASA-cov CEE N° 2015/2397

CHARACTERISTICS

Maturity +10 days Garofa-cov
Flowering time +10 days Garofa-cov
Bloom set Good
Production Very good
Tree Vigorous, half-open

FRUIT

Shape Round
Firmness Very good
Cracking No
Skin colour Dark red
Size A-AA
Organoleptic qualities Very good, sweet, sub-acid

**GARDETA-cov** (N48-25)

SB

Breeder - Owner PSB Producción Vegetal
CPVO patent GARDETA-cov CEE N° 2003/1890

CHARACTERISTICS

Maturity -15 days Luciana-cov
Flowering time Luciana-cov period
Bloom set Good
Production Very good
Tree Vigorous, half-open

FRUIT

Shape Round
Firmness Very good
Cracking No
Skin colour Intense red with sugar spots
Size A-AA
Organoleptic qualities Very good, sweet, sub-acid



ATANAIS-cov (5661-26)

SB

Breeder - Owner PSB Producción Vegetal
CPVO patent ATANAIS-cov CEE N° 2016/2626

CHARACTERISTICS

Maturity -10 days Luciana-cov
Flowering time -5 days Luciana-cov
Bloom set Very good
Production Very good
Tree Vigorous, half-open

FRUIT

Shape Round
Firmness Very good
Cracking No
Skin colour Dark red, bright
Size AA-A
Organoleptic qualities Very good, sub-acid



MATISS-cov (5661-56)

SB

NEW

Breeder - Owner PSB Producción Vegetal
CPVO patent MATISS-cov CEE N° 2020/2677

CHARACTERISTICS

Maturity -5 days Luciana-cov
Flowering time Luciana-cov period
Bloom set Very good
Production Very good
Tree Medium vigor, half-open

FRUIT

Shape Round, tipless
Firmness Very good, holds on the tree
Cracking No
Skin colour Shiny dark red
Size AA
Organoleptic qualities Very good, sub-acid, aromatic



LUCIANA-cov (N47-13)

SB

Breeder - Owner PSB Producción Vegetal
CPVO patent LUCIANA-cov CEE N° 2006/0021

CHARACTERISTICS

Maturity +10 days Big Top®
Flowering time Big Top® period
Bloom set Very good
Production Very good
Tree Vigorous, half-open

FRUIT

Shape Round
Firmness Very good
Cracking No
Skin colour Bright red
Size AA
Organoleptic qualities Good, sweet, aromatic, sub-acid



CLARISS-cov (4052-22)

SB

Breeder - Owner PSB Producción Vegetal
CPVO patent CLARISS-cov CEE N° 2014/2513

CHARACTERISTICS

Maturity +5 days Luciana-cov
Flowering time Late, +5 days Luciana-cov
Bloom set Good
Production Very good
Tree Vigorous, half-open

FRUIT

Shape Round
Firmness Very good
Cracking No
Skin colour 100 % dark red
Size AA-A
Organoleptic qualities Very good, aromatic, sub-acid



SUCULENTE-cov (5785-3)

SB

NEW

Breeder - Owner PSB Producción Vegetal
CPVO patent SUCULENTE-cov CEE N° 2020/2678

CHARACTERISTICS

Maturity +15 days Luciana-cov
Flowering time Luciana-cov period
Bloom set Very good
Production Very good
Tree Medium vigor, half-open

FRUIT

Shape Round, tipless
Firmness Very good
Cracking No
Skin colour Dark red, bright
Size AA
Organoleptic qualities Very good, sweet, sub-acid, aromatic



PENELOPE-cov (5549-25)

SB

NEW

Breeder - Owner PSB Producción Vegetal
CPVO patent PENELOPE-cov CEE N°2021/2716

CHARACTERISTICS

Maturity +5 days Clariss-cov
Flowering time -10 days Clariss-cov
Bloom set Very good
Production Very good
Tree Normal vigor, half-open

FRUIT

Shape Round
Firmness Very good
Cracking No
Skin colour 100 % red
Size AA
Organoleptic qualities Amazing, sweet, sub-acid



ESMERALDA-cov (4055-10)

Breeder - Owner PSB Producción Vegetal
CPVO patent ESMERALDA-cov CEE N° 2017/2612

CHARACTERISTICS

Maturity Late, +5 days Western Red-cov
Flowering time Late, Western Red-cov period
Bloom set Very good
Production Very good
Tree Vigorous, half-open

FRUIT

Shape Round
Firmness Very good
Cracking No
Skin colour Orange red
Size A-AA
Organoleptic qualities Very good, sweet, balanced



BN1024-5-cov



Breeder - Owner PSB Producción Vegetal
CPVO patent BN1024-5-cov

CHARACTERISTICS

Maturity Late, +10 days Western Red-cov
Flowering time Late, Western Red-cov period
Bloom set Very good
Production Very good
Tree Vigorous, half-open

FRUIT

Shape Round
Firmness Very good
Cracking No
Skin colour Orange red
Size A-AA
Organoleptic qualities Very good, sweet, balanced



ALTAMIRA-cov (5710-50) SB

Breeder - Owner PSB Producción Vegetal
CPVO patent ALTAMIRA-cov CEE N° 2018/2723

CHARACTERISTICS

Maturity Early, -5 days Boreal-cov
Flowering time Early, -15 days Boreal-cov
Bloom set Very good
Production Very good
Tree Vigorous, half-open

FRUIT

Shape Round
Firmness Very good
Cracking No
Skin colour Dark red
Size A-AA
Organoleptic qualities Very good, sub-acid, aromatic



BOREAL-cov (T333-31) SB

Breeder - Owner PSB Producción Vegetal
CPVO patent BOREAL-cov CEE N° 2014/2530

CHARACTERISTICS

Maturity Half-early, -15 days Garcica-cov
Flowering time -15 days Garcica-cov
Bloom set Very good
Production Very good
Tree Vigorous, half-open

FRUIT

Shape Round
Firmness Very good
Cracking No
Skin colour Dark red
Size A-AA
Organoleptic qualities Very good, aromatic, sub-acid



TN272-23-cov NEW SB

Breeder - Owner PSB Producción Vegetal
CPVO patent TN272-23-cov

CHARACTERISTICS

Maturity +10 days Boreal-cov
Flowering time -10 days Boreal-cov
Bloom set Very good
Production Very good
Tree Medium vigor, half-open

FRUIT

Shape Round, flat
Firmness Very good
Cracking No
Skin colour Shiny dark red
Size A-AA
Organoleptic qualities Very good, sweet, sub-acid, aromatic



AMAPOLA-cov (5829-22) SB

Breeder - Owner PSB Producción Vegetal
CPVO patent AMAPOLA-cov CEE N° 2019/2724

CHARACTERISTICS

Maturity -5 days Garcica-cov
Flowering time Boreal-cov period
Bloom set Very good
Production Very good
Tree Vigorous, half-open

FRUIT

Shape Perfect round
Firmness Very good
Cracking No
Skin colour Shiny red
Size AA
Organoleptic qualities Very good, sweet, aromatic



GARCICA-cov R22 (N48-21) SB

Breeder - Owner PSB Producción Vegetal
CPVO patent GARCICA-cov CEE N° 2003/1885

CHARACTERISTICS

Maturity -5 days Big Top®
Flowering time -5 days Big Top®
Bloom set Good
Production Very good
Tree Vigorous, half-open

FRUIT

Shape Round
Firmness Very good
Cracking No
Skin colour Dark red
Size A-AA
Organoleptic qualities Good, sweet, sub-acid



CALICOBA-cov (5635-31) NEW SB

Breeder - Owner PSB Producción Vegetal
CPVO patent CALICOBA-cov CEE N° 2021/2717

CHARACTERISTICS

Maturity -10 days Tiffany-cov
Flowering time -5 days Tiffany-cov
Bloom set Very good
Production Very good
Tree Vigorous, half-open

FRUIT

Shape Round
Firmness Very good
Cracking No
Skin colour Bright red
Size AA
Organoleptic qualities Sweet, aromatic, sub-acid



D531-14-cov NEW SB

Breeder - Owner PSB Producción Vegetal
CPVO patent D531-14-cov

CHARACTERISTICS

Maturity Seasonal, +5 days Garcica-cov
Flowering time Seasonal, Garcica-cov period
Bloom set Very good
Production Very good
Tree Normal vigor, half-open

FRUIT

Shape Round, elongated
Firmness Very good
Cracking No
Skin colour 100 % red
Size AA
Organoleptic qualities Good, sweet, sub-acid



BURMA-cov (5549-45) SB

Breeder - Owner PSB Producción Vegetal
CPVO patent BURMA-cov CEE N° 2017/2624

CHARACTERISTICS

Maturity -10 days Tiffany-cov
Flowering time -5 days Tiffany-cov
Bloom set Very good
Production Very good
Tree Vigorous, half-open

FRUIT

Shape Round
Firmness Very good
Cracking No
Skin colour Bright red
Size AA
Organoleptic qualities Sweet, aromatic, sub-acid



VAHINE-cov (5904-21)



Breeder - Owner PSB Producción Vegetal
CPVO patent VAHINE-cov CEE N° 2020/2668

CHARACTERISTICS

Maturity -5 days Tiffany-cov
Flowering time Tiffany-cov period
Bloom set Very good
Production Very good
Tree Medium vigor, half-open

FRUIT

Shape Round, tipless
Firmness Very good, holds on the tree
Cracking No
Skin colour Dark red, bright
Size AA
Organoleptic qualities Very good, sub-acid, aromatic



TIFANY-cov (4050-1)



Breeder - Owner PSB Producción Vegetal
CPVO patent TIFANY-cov CEE N° 2010/2743

CHARACTERISTICS

Maturity Half-late, +30 days Garcia-cov
Flowering time Garcia-cov period
Bloom set Very good
Production Very good
Tree Vigorous, half-open

FRUIT

Shape Round
Firmness Very good
Cracking No
Skin colour Dark red
Size AA
Organoleptic qualities Sweet, aromatic, sub-acid



BUT-12-17-1-cov



Breeder - Owner PSB Producción Vegetal
CPVO patent BUT-12-17-1-cov

CHARACTERISTICS

Maturity Late, Tourmaline® period
Flowering time Late, Tourmaline® period
Bloom set Very good
Production Very good
Tree Normal vigor, half-open

FRUIT

Shape Round flat
Firmness Very good
Cracking No
Skin colour 100 % red
Size AA
Organoleptic qualities Very good, sweet, balanced



SIDONIA-cov (BN944-4)



Breeder - Owner PSB Producción Vegetal
CPVO patent SIDONIA-cov CEE N° 2021/2270

CHARACTERISTICS

Maturity +40 days Tiffany-cov
Flowering time +10 days Tiffany-cov
Bloom set Very good
Production Very good
Tree Medium vigor, half-open

FRUIT

Shape Round, tipless
Firmness Very good, holds on the tree
Cracking No
Skin colour 100 % dark red
Size AA
Organoleptic qualities Very good, sub-acid, aromatic





NECTAGOLD CALENDAR

APRIL			MAY			JUNE			JULY			AUGUST			SEPTEMBER					
20	25	30	5	10	15	20	25	30	5	10	15	20	25	30	5	10	15	20	25	30
								SB DAYTONA-cov TN379-10												
								SB BN1003-5-cov												
								BN1002-25-cov												
								5889-120-cov												

SB SUB-ACID

Nectagold

PSB Producción Vegetal

DAYTONA-cov (TN379-10) SB

Breeder - Owner PSB Producción Vegetal
CPVO patent DAYTONA-cov CEE Nº 2017/2633

CHARACTERISTICS

Maturity Garofa-cov period
Flowering time Garofa-cov period
Bloom set Very good
Production Very good
Tree Vigorous, half-open

FRUIT

Shape Round
Firmness Very good
Cracking No
Skin colour Yellow with red blush
Size B
Organoleptic qualities Very good, balanced, sweet and very aromatic



BN1003-5 SB

Breeder - Owner PSB Producción Vegetal
CPVO patent BN1003-5

CHARACTERISTICS

Maturity Seasonal, +25 days Daytona-cov
Flowering time Late, +25 days Daytona-cov
Bloom set Very good
Production Very good
Tree Vigorous, half-open

FRUIT

Shape Round
Firmness Very good
Cracking No
Skin colour Yellow with red blush
Size A
Organoleptic qualities Very good, balanced, very sweet and very aromatic



BN1002-25-cov SB

Breeder - Owner PSB Producción Vegetal
CPVO patent BN1002-25-cov

CHARACTERISTICS

Maturity Media, +5 days Luciana-cov
Flowering time Media, +5 days Daytona-cov
Bloom set Very good
Production Very good
Tree Vigorous, half-open

FRUIT

Shape Round
Firmness Good
Cracking No
Skin colour Yellow with red blush
Size A
Organoleptic qualities Very good, balanced, sweet and very aromatic



5889-120-cov SB

Breeder - Owner PSB Producción Vegetal
CPVO patent 5889-120-cov

CHARACTERISTICS

Maturity Seasonal, +40 days Daytona-cov
Flowering time Late, +25 days Daytona-cov
Bloom set Very good
Production Very good
Tree Vigorous, half-open

FRUIT

Shape Round
Firmness Very good
Cracking No
Skin colour Yellow
Size A-AA
Organoleptic qualities Very good, balanced, sweet and very aromatic



//NECTARINE



Yellow fleshed peach

PSB Producción Vegetal

FILOMENA-cov (T78-15)

Breeder - Owner PSB Producción Vegetal
CPVO patent FILOMENA-cov CEE N° 2014/2529

CHARACTERISTICS

Maturity Extra-early, -5 days Astoria-cov
Flowering time Astoria-cov period
Bloom set Good
Production Very good
Tree Vigorous, half-open

FRUIT

Shape Round
Firmness Good
Cracking No
Skin colour Dark red
Size B
Organoleptic qualities Good, balanced



ASTORIA-cov (B80-16)

Breeder - Owner PSB Producción Vegetal
CPVO patent ASTORIA-cov CEE N° 2010/2742

CHARACTERISTICS

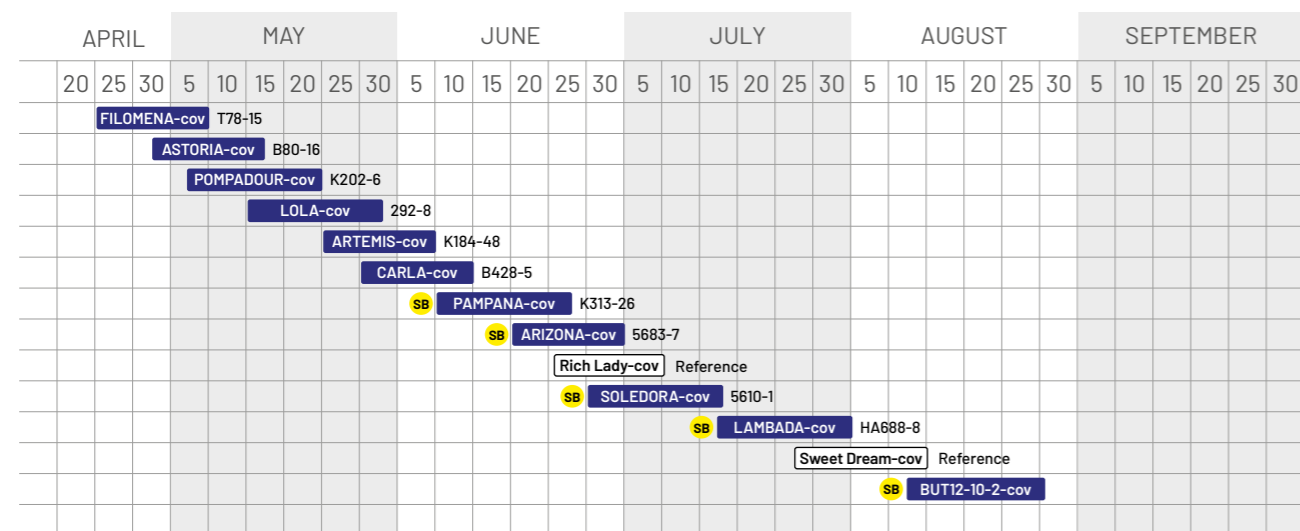
Maturity Very early, Plagold® period
Flowering time Early, Plagold® period
Bloom set Good
Production Very good
Tree Vigorous, half-open

FRUIT

Shape Round
Firmness Good
Cracking No
Skin colour Intense red
Size B-A
Organoleptic qualities Good, balanced



YELLOW FLESHED PEACH CALENDAR



SB SUB-ACID

POMPADOUR-cov (K202-6)

Breeder - Owner PSB Producción Vegetal
CPVO patent POMPADOUR-cov CEE N° 2016/2620

CHARACTERISTICS

Maturity Early, +5 days Astoria-cov
Flowering time Early, Astoria-cov period
Bloom set Very good
Production Very good
Tree Vigorous, half-open

FRUIT

Shape Round
Firmness Good
Cracking No
Skin colour Dark red
Size A
Organoleptic qualities Good, balanced



LOLA-cov (292-8)

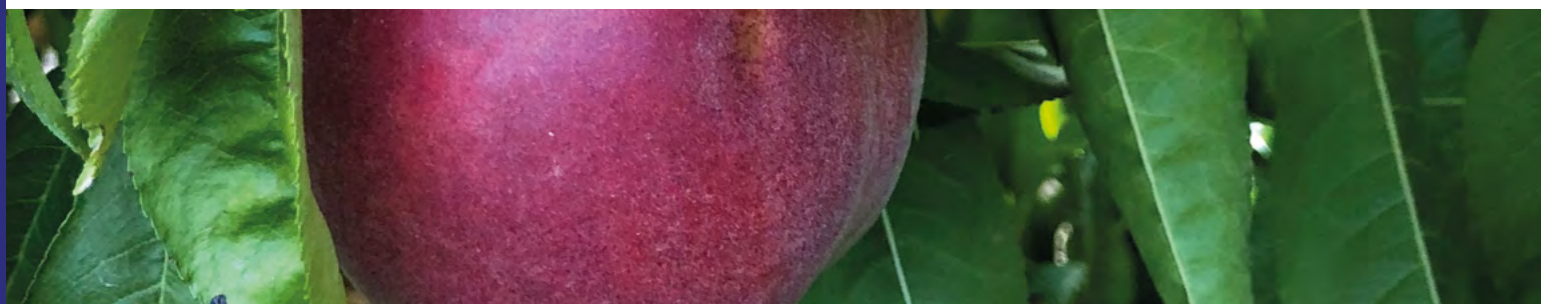
Breeder - Owner PSB Producción Vegetal
CPVO patent LOLA-cov CEE N° 2010/2753

CHARACTERISTICS

Maturity Seasonal, -5 days Carla-cov
Flowering time Extra-early, Astoria-cov period
Bloom set Very good
Production Very good
Tree Vigorous, half-open

FRUIT

Shape Round
Firmness Very good
Cracking No
Skin colour Intense red
Size A-AA
Organoleptic qualities Good, balanced



//PEACH

ARTEMIS-cov (K184-48)

Breeder - Owner PSB Producción Vegetal
CPVO patent ARTEMIS-cov CEE Nº 2014/2516

CHARACTERISTICS

Maturity Early, +15 days Astoria-cov
Flowering time +10 days Astoria-cov
Bloom set Good
Production Very good
Tree Vigorous, half-open

FRUIT

Shape Round
Firmness Good
Cracking No
Skin colour Dark red
Size A-AA
Organoleptic qualities Good, aromatic, balanced



CARLA-cov (B428-5)

Breeder - Owner PSB Producción Vegetal
CPVO patent CARLA-cov CEE Nº 2012/2213

CHARACTERISTICS

Maturity +20 days Astoria-cov
Flowering time +30 days Astoria-cov
Bloom set Good
Production Very good
Tree Vigorous, half-open

FRUIT

Shape Round
Firmness Good
Cracking No
Skin colour Intense red
Size A
Organoleptic qualities Very good, sub-acid



SOLEDORA-cov (5610-1)

SB

Breeder - Owner PSB Producción Vegetal
CPVO patent SOLEDORA-cov CEE Nº 2020/2662

CHARACTERISTICS

Maturity Seasonal, +30 days Carla-cov
Flowering time Seasonal, +5 days Carla-cov
Bloom set Very good
Production Very good
Tree Normal vigor, half-open

FRUIT

Shape Round flat
Firmness Good, tipless
Cracking No
Skin colour Dark red
Size AA
Organoleptic qualities Amazing, sweet and sub-acid



LAMBADA-cov (HA688-8)

SB

Breeder - Owner PSB Producción Vegetal
CPVO patent LAMBADA-cov CEE Nº 2016/2624

CHARACTERISTICS

Maturity Seasonal, -10 days Sweet Dream-cov
Flowering time Sweet Dream-cov period
Bloom set Very good
Production Very good
Tree Vigorous, half-open

FRUIT

Shape Round
Firmness Very good
Cracking No
Skin colour Intense red
Size AA
Organoleptic qualities Very good, aromatic, sub-acid



PAMPANA-cov (K313-26)

SB

Breeder - Owner PSB Producción Vegetal
CPVO patent PAMPANA-cov CEE Nº 2014/2518

CHARACTERISTICS

Maturity Half-early, +10 days Carla-cov
Flowering time -5 days Carla-cov
Bloom set Very good
Production Very good
Tree Vigorous, half-open

FRUIT

Shape Round, flat
Firmness Very good
Cracking No
Skin colour Intense red
Size A-AA
Organoleptic qualities Very good, aromatic, sub-acid



ARIZONA-cov (5683-7)

SB

Breeder - Owner PSB Producción Vegetal
CPVO patent ARIZONA-cov CEE Nº 2017/2625

CHARACTERISTICS

Maturity +20 days Carla-cov
Flowering time -5 days Carla-cov
Bloom set Very good
Production Very good
Tree Vigorous, half-open

FRUIT

Shape Round
Firmness Good
Cracking No
Skin colour Red
Size AA
Organoleptic qualities Good, aromatic, sub-acid



BUT12-10-2-cov

SB
NEW

Breeder - Owner PSB Producción Vegetal
CPVO patent BUT12-10-2-cov

CHARACTERISTICS

Maturity Late, +10 days Sweet Dream-cov
Flowering time Sweet Dream-cov period
Bloom set Very good
Production Very good
Tree Normal vigor, half-open

FRUIT

Shape Round
Firmness Very good
Cracking No
Skin colour 100 % dark red
Size AA
Organoleptic qualities Amazing, sweet and sub-acid





AMANDINA-cov (T191-1)

Breeder - Owner PSB Producción Vegetal
CPVO patent AMANDINA-cov CEE N° 2013/3048

CHARACTERISTICS

Maturity Extra-early, Plawhite® period
Flowering time Plawhite® period
Bloom set Very good
Production Very good
Tree Vigorous, half-open

FRUIT

Shape Round
Firmness Very good
Cracking No
Skin colour Dark red
Size A-AA
Organoleptic qualities Good, balanced, aromatic



MARMARA-cov (5746-17)

Breeder - Owner PSB Producción Vegetal
CPVO patent MARMARA-cov CEE N° 2019/2722

CHARACTERISTICS

Maturity +7 days Amandina-cov
Flowering time +7 days Amandina-cov
Bloom set Good
Production Very good
Tree Normal vigor, half-open

FRUIT

Shape Round
Firmness Very good
Cracking No
Skin colour Dark red
Size AA
Organoleptic qualities Very good, sub-acid, aromatic



WHITE FLESHED PEACH CALENDAR

APRIL			MAY			JUNE			JULY			AUGUST			SEPTEMBER					
20	25	30	5	10	15	20	25	30	5	10	15	20	25	30	5	10	15	20	25	30
			AMANDINA-cov					T191-1												
			MARMARA-cov					5746-17												
			PAMELA-cov					B407-2												
								Patty®			Reference									
								SB			MAREVA-cov			K313-24						
											Maura®			Reference						
											ALABAMA-cov			5888-25						
														SB			MELISSA-cov			HA693-1
																				SB
																				IBIZA-cov
																				4094-16
																				SB
																				BN984-6-cov

SB SUB-ACID

PAMELA-cov (B407-2)

Breeder - Owner PSB Producción Vegetal
CPVO patent PAMELA-cov CEE N° 2012/2212

CHARACTERISTICS

Maturity -5 days Patty®
Flowering time Seasonal, Patty® period
Bloom set Very good
Production Very good
Tree Vigorous, half-open

FRUIT

Shape Round
Firmness Good
Cracking No
Skin colour Dark red
Size A
Organoleptic qualities Very good, aromatic



MAREVA-cov (K313-24)

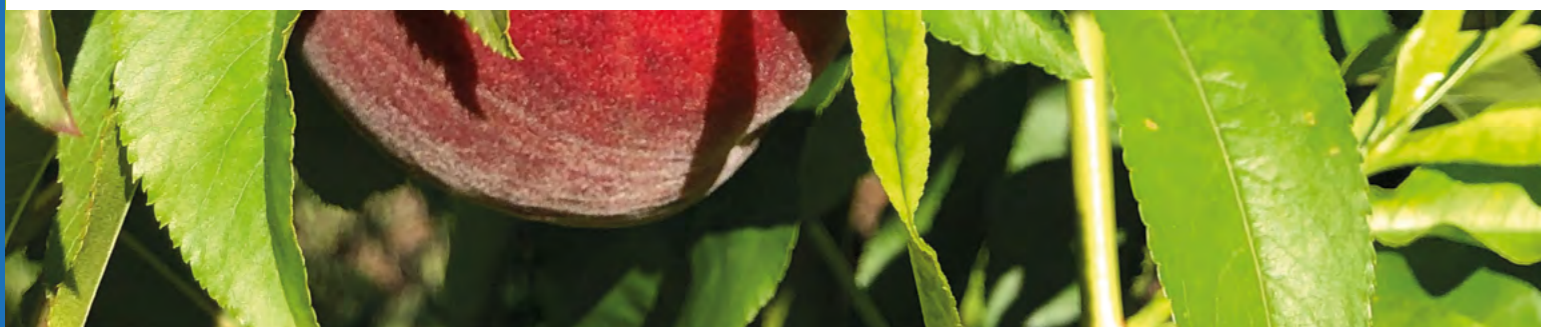
Breeder - Owner PSB Producción Vegetal
CPVO patent MAREVA-cov CEE N° 2015/2396

CHARACTERISTICS

Maturity Half-early, +10 days Pamela-cov
Flowering time Early, -5 days Pamela-cov
Bloom set Very good
Production Very good
Tree Vigorous, half-open

FRUIT

Shape Round
Firmness Very good
Cracking No
Skin colour Intense red
Size A-AA
Organoleptic qualities Very good, aromatic, sub-acid



ALABAMA-cov (5888-25)

Breeder - Owner PSB Producción Vegetal
CPVO patent ALABAMA-cov CEE N° 2017/2630

CHARACTERISTICS

Maturity Seasonal, +20 days Pamela-cov
Flowering time +12 days Mareva-cov
Bloom set Very good
Production Very good
Tree Vigorous, half-open

FRUIT

Shape Round
Firmness Very good
Cracking No
Skin colour Dark red
Size A
Organoleptic qualities Very good, aromatic, sub-acid



MELISSA-cov (HA693-1)

SB

Breeder - Owner PSB Producción Vegetal
CPVO patent MELISSA-cov CEE N° 2016/2625

CHARACTERISTICS

Maturity Seasonal, -5 days Ibiza-cov
Flowering time +5 days Mareva-cov
Bloom set Very good
Production Very good
Tree Vigorous, half-open

FRUIT

Shape Round
Firmness Very good
Cracking No
Skin colour Dark red
Size A-AA
Organoleptic qualities Very good, aromatic, sub-acid



IBIZA-cov (4094-16)

SB

Breeder - Owner PSB Producción Vegetal
CPVO patent IBIZA-cov CEE N° 2014/1044

CHARACTERISTICS

Maturity Half-late, -5 days Summer Sweet®
Flowering time Late, Summer Sweet® period
Bloom set Very good
Production Very good
Tree Vigorous, half-open

FRUIT

Shape Round
Firmness Very good
Cracking No
Skin colour Intense red
Size A-AA
Organoleptic qualities Very good, aromatic, sub-acid



BN984-6-cov

NEW

Breeder - Owner PSB Producción Vegetal
CPVO patent BN984-6-cov

CHARACTERISTICS

Maturity Half-late, +10 days Ibiza
Flowering time Late, Ibiza period
Bloom set Very good
Production Very good
Tree Vigorous, half-open

FRUIT

Shape Round
Firmness Very good
Cracking No
Skin colour Intense red
Size A-AA
Organoleptic qualities Very good, aromatic, sub-acid





'CLINGSTONE' PEACH CALENDAR

APRIL			MAY			JUNE			JULY			AUGUST			SEPTEMBER					
20	25	30	5	10	15	20	25	30	5	10	15	20	25	30	5	10	15	20	25	30
						ZN175-5-cov														
									PALOMBAGGIA-cov	HA167-2										
									BORNEO-cov	HA163-56										
												Sweet Dream-cov	Reference							
												TN472-5-cov								
															TN473-9-cov					



ZN175-5-cov

Breeder - Owner PSB Producción Vegetal
CPVO patent ZN175-5-cov

CHARACTERISTICS

Maturity -10 days Palombaggia-cov
Flowering time -10 days Palombaggia-cov
Bloom set Very good
Production Very good
Tree High vigor, half-open

FRUIT

Shape Round
Firmness Good
Cracking No
Skin colour Yellow with red blush
Size B-A
Organoleptic qualities Traditional, aromatic



//PEACH

'Clingstone' peach

PSB Producción Vegetal

PALOMBAGGIA-cov (HA167-2)

Breeder - Owner PSB Producción Vegetal
CPVO patent PALOMBAGGIA-cov CEE N° 2017/2632

CHARACTERISTICS

Maturity Early, -10 days Romea
Flowering time Early, -20 days Romea
Bloom set Very good
Production Very good
Tree Vigorous, half-open

FRUIT

Shape Round
Firmness Good
Cracking No
Skin colour 100 % yellow
Size A-AA
Organoleptic qualities Good, balanced



TN472-5-cov

Breeder - Owner PSB Producción Vegetal
CPVO patent TN472-5-cov

CHARACTERISTICS

Maturity -5 days Mountain Gold
Flowering time Mountain Gold period
Bloom set Good
Production Very good
Tree Vigorous, half-open

FRUIT

Shape Round
Firmness Good
Cracking No
Skin colour 100 % yellow
Size AA
Organoleptic qualities Good, balanced



//PEACH

BORNEO-cov (HA163-56)

Breeder - Owner PSB Producción Vegetal
CPVO patent BORNEO-cov CEE N° 2017/2614

CHARACTERISTICS

Maturity Early, -5 days Romea
Flowering time -10 days Romea
Bloom set Good
Production Very good
Tree Vigorous, half-open

FRUIT

Shape Round
Firmness Good
Cracking No
Skin colour 100 % yellow
Size A
Organoleptic qualities Good, balanced



TN473-9-cov

Breeder - Owner PSB Producción Vegetal
CPVO patent TN473-9-cov

CHARACTERISTICS

Maturity Mountain Gold period
Flowering time Mountain Gold period
Bloom set Good
Production Very good
Tree Vigorous, half-open

FRUIT

Shape Round
Firmness Good
Cracking No
Skin colour 100 % yellow
Size A-AA
Organoleptic qualities Very good



43



YELLOW FLESHED FLAT PEACH CALENDAR

APRIL			MAY			JUNE			JULY			AUGUST			SEPTEMBER					
20	25	30	5	10	15	20	25	30	5	10	15	20	25	30	5	10	15	20	25	30
		SB	KIWANI-cov	5607-6																
			SB	DIVADONA-cov	5544-54															
								SB	OSIRIS-cov	HA555-3										

SB SUB-ACID



Yellow fleshed flat peach

PSB Producción Vegetal

KIWANI-cov (5607-6-cov)



Breeder - Owner PSB Producción Vegetal
CPVO patent KIWANI-cov CEE N° 2021/2726

CHARACTERISTICS

Maturity -5 days Divadona-cov
Flowering time -10 days Samantha-cov
Bloom set Very good
Production Very good
Tree Vigorous, half-open

FRUIT

Shape Flat
Firmness Good
Cracking No
Skin colour Red
Size B
Organoleptic qualities Sweet, sub-acid



DIVADONA-cov (5544-54)



Breeder - Owner PSB Producción Vegetal
CPVO patent DIVADONA-cov CEE N° 2014/2514

CHARACTERISTICS

Maturity -15 days Samantha-cov
Flowering time Zodiac period
Bloom set Very good
Production Very good
Tree Vigorous, half-open

FRUIT

Shape Flat
Firmness Good
Cracking No
Skin colour Dark red
Size B-A
Organoleptic qualities Very good, aromatic, sub-acid



OSIRIS-cov (HA555-3)



Breeder - Owner PSB Producción Vegetal
CPVO patent OSIRIS-cov CEE N° 2014/2515

CHARACTERISTICS

Maturity +5 days Samantha-cov
Flowering time -5 days Samantha-cov
Bloom set Very good
Production Very good
Tree Vigorous, half-open

FRUIT

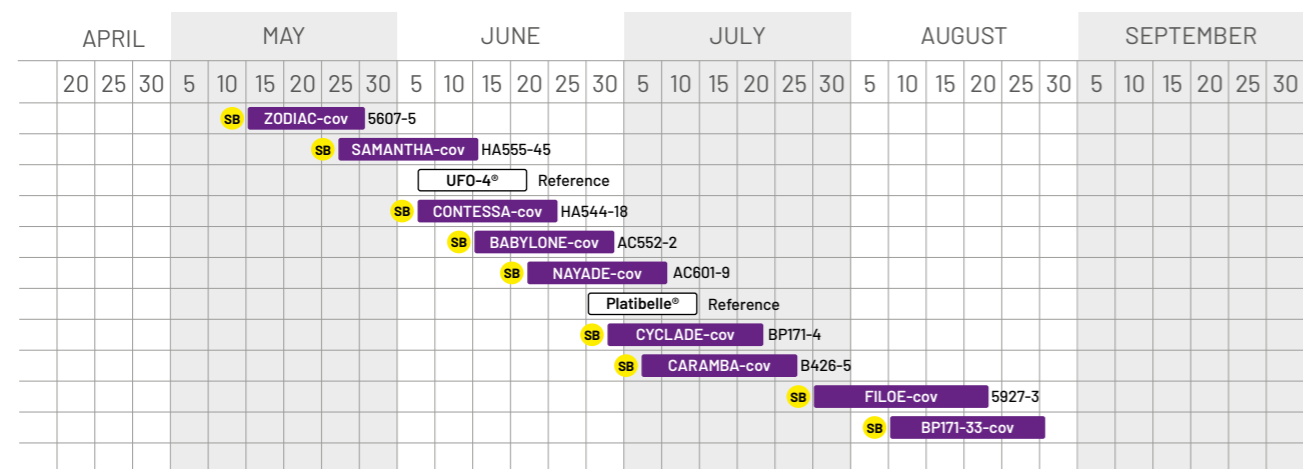
Shape Flat
Firmness Very good
Cracking No
Skin colour Intense red
Size A-AA
Organoleptic qualities Very good, aromatic, sub-acid



//FLAT PEACH AND NECTARINE



WHITE FLESHED FLAT PEACH CALENDAR



SB SUB-ACID

White fleshed flat peach

ZODIAC-cov (5607-5) SB

Breeder - Owner PSB Producción Vegetal
CPVO patent ZODIAC-cov CEE N° 2018/2720

CHARACTERISTICS

Maturity Early, -10 days Samantha-cov
Flowering time Early, -15 days Samantha-cov
Bloom set Very good
Production Very good
Tree Vigorous, half-open

FRUIT

Shape Flat
Firmness Good
Cracking No
Skin colour Dark red
Size B-A
Organoleptic qualities Very good, aromatic, sub-acid



SAMANTHA-cov (HA555-45) SB

Breeder - Owner PSB Producción Vegetal
CPVO patent SAMANTHA-cov CEE N° 2012/2218

CHARACTERISTICS

Maturity Early, + 5 days Carioca -cov
Flowering time Early, + 5 days Carioca-cov
Bloom set Good
Production Very good
Tree Vigorous, half-open

FRUIT

Shape Flat
Firmness Good
Cracking No
Skin colour Intense red
Size A-AA
Organoleptic qualities Very good, sub-acid



CONTESSA-cov (HA544-18) SB

Breeder - Owner PSB Producción Vegetal
CPVO patent CONTESSA-cov CEE N° 2016/2627

CHARACTERISTICS

Maturity UF04® period
Flowering time UF04® period
Bloom set Good
Production Very good
Tree Vigorous, half-open

FRUIT

Shape Flat
Firmness Very good
Cracking No
Skin colour Intense red
Size AA-A
Organoleptic qualities Very good, sub-acid



BABYLONE-cov (AC552-2) SB

Breeder - Owner PSB Producción Vegetal
CPVO patent BABYLONE-cov CEE N° 2018/2721

CHARACTERISTICS

Maturity +5 days Contessa-cov
Flowering time Contessa-cov period
Bloom set Elevated
Production Very good
Tree Vigorous, half-open

FRUIT

Shape Flat
Firmness Very good
Cracking No
Skin colour Dark red
Size AA-A
Organoleptic qualities Very good, sub-acid, aromatic



NAYADE-cov (AC601-9)



Breeder - Owner PSB Producción Vegetal
CPVO patent NAYADE-cov CEE N° 2021/2722

CHARACTERISTICS

Maturity Seasonal, +10 days Babylone-cov
Flowering time Early, Samantha-cov period
Bloom set High
Production Very good
Tree Vigorous, half-open

FRUIT

Shape Flat
Firmness Very good
Cracking No
Skin colour Red
Size AA
Organoleptic qualities Very sweet, sub-acid



CYCLADE-cov (BP171-4)



Breeder - Owner PSB Producción Vegetal
CPVO patent CYCLADE-cov CEE N° 2021/2725

CHARACTERISTICS

Maturity Late, -10 days Filoe-cov
Flowering time Late, -5 days Filoe-cov
Bloom set High
Production Very good
Tree Vigorous, half-open

FRUIT

Shape Flat
Firmness Very good
Cracking No
Skin colour Red
Size AA
Organoleptic qualities Very sweet, sub-acid



BP171-33-COV



Breeder - Owner PSB Producción Vegetal
CPVO patent BP171-33-cov

CHARACTERISTICS

Maturity Extra-late, +10 days Filoe-cov
Flowering time Late, +5 days Filoe-cov
Bloom set High
Production Very good
Tree Vigorous, half-open

FRUIT

Shape Flat
Firmness Very good
Cracking No
Skin colour Light red
Size AA
Organoleptic qualities Very sweet and sub-acid



CARAMBA-cov (B426-5)



Breeder - Owner PSB Producción Vegetal
CPVO patent CARAMBA-cov CEE N° 2013/3057

CHARACTERISTICS

Maturity Platibelle-cov period
Flowering time Platibelle-cov period
Bloom set Good
Production Very good
Tree Vigorous, half-open

FRUIT

Shape Flat
Firmness Very good
Cracking Very weak
Skin colour Dark red
Size A-AA
Organoleptic qualities Very good, aromatic, sub-acid



FILOE-cov (5927-3)



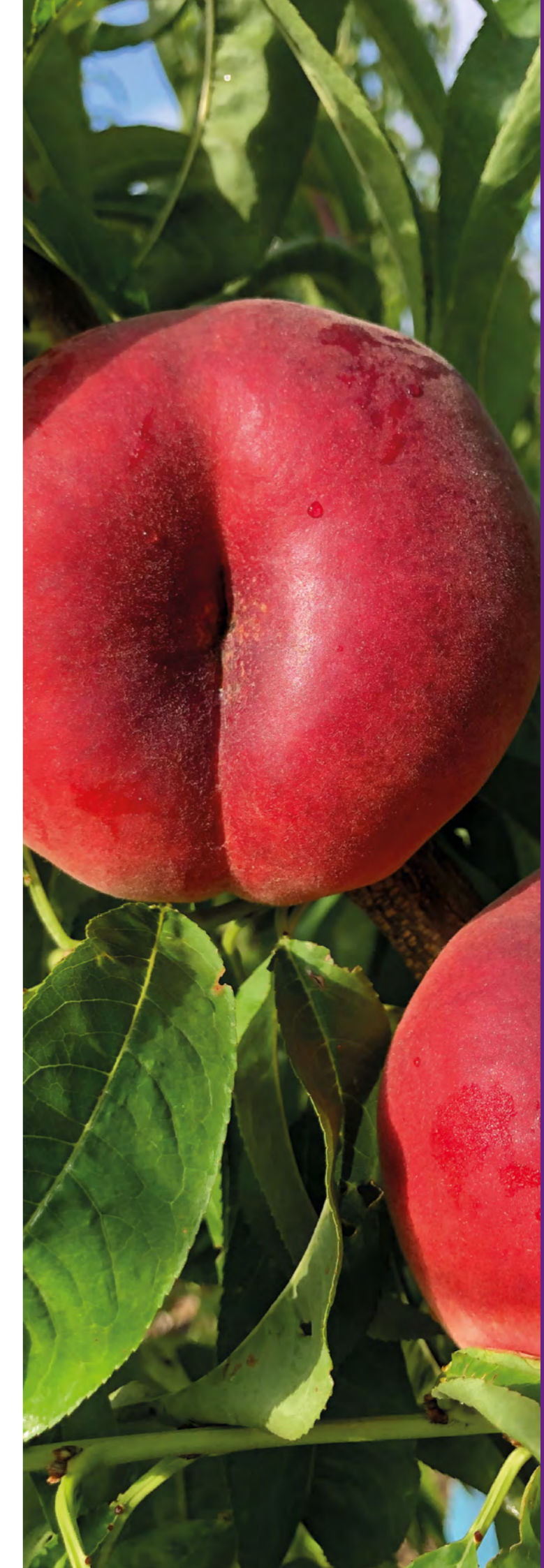
Breeder - Owner PSB Producción Vegetal
CPVO patent FILOE-cov CEE N° 2016/2629

CHARACTERISTICS

Maturity Late, +5 days Sweet Cap®
Flowering time Late, Sweet Cap® period
Bloom set Good
Production Very good
Tree Vigorous, half-open

FRUIT

Shape Flat
Firmness Very good
Cracking No
Skin colour Dark red
Size AA
Organoleptic qualities Very good, aromatic, sub-acid





Yellow fleshed flat nectarine

PSB Producción Vegetal

AC459-25-cov



Breeder - Owner PSB Producción Vegetal
CPVO patent AC459-25-cov

CHARACTERISTICS

Maturity Seasonal, +20 days Samantha-cov
Flowering time Early, Samantha-cov period
Bloom set High
Production Very good
Tree Vigorous, half-open

FRUIT

Shape Flat
Firmness Very good
Cracking No
Skin colour Bright red
Size B-A
Organoleptic qualities Very sweet, aromatic, sub-acid



BP171-5-cov



Breeder - Owner PSB Producción Vegetal
CPVO patent BP171-5-cov

CHARACTERISTICS

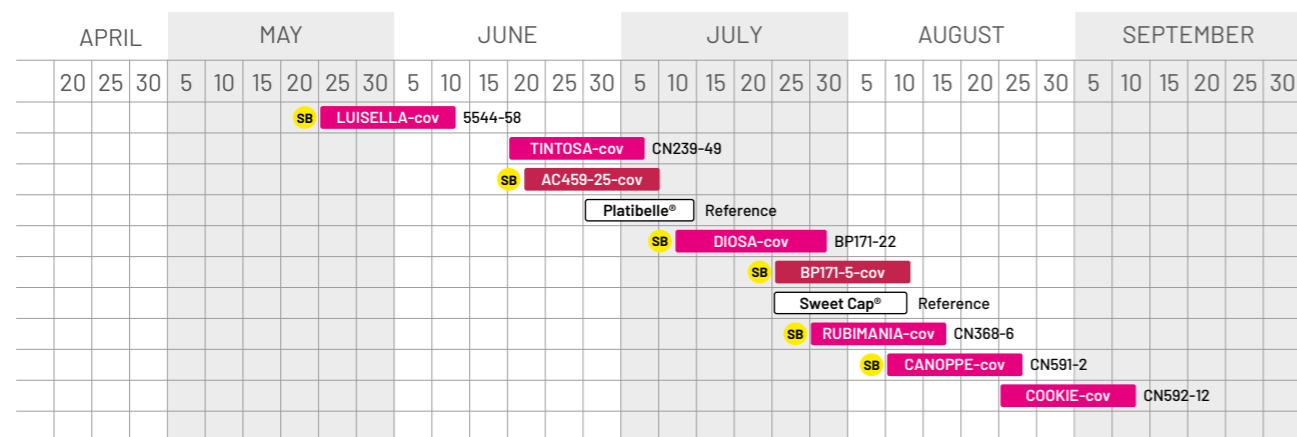
Maturity Half-late, -10 days Filoe-cov
Flowering time Half-late, Filoe-cov period
Bloom set High
Production Very good
Tree Vigorous, half-open

FRUIT

Shape Flat
Firmness Very good
Cracking No
Skin colour Bright red
Size AA
Organoleptic qualities Very sweet, sub-acid



FLAT NECTARINE CALENDAR



YELLOW FLESHED FLAT NECTARINE WHITE FLESHED FLAT NECTARINE SB SUB-ACID

LUISELLA-cov (5544-58)



Breeder - Owner PSB Producción Vegetal
CPVO patent LUISELLA-cov CEE N° 2020/2679

CHARACTERISTICS

Maturity -5 days Samantha-cov
Flowering time -15 days Samantha-cov
Bloom set Very good
Production Very good
Tree Normal vigor, half-straight

FRUIT

Shape Round, flat
Firmness Good
Cracking No
Skin colour Dark red
Size B-A
Organoleptic qualities Very good, sweet, sub-acid



TINTOSA-cov (CN239-49)



Breeder - Owner PSB Producción Vegetal
CPVO patent TINTOSA-cov CEE N° 2020/2680

CHARACTERISTICS

Maturity +20 days Samantha-cov
Flowering time +10 days Samantha-cov
Bloom set Very good
Production Very good
Tree Vigorous, half-straight

FRUIT

Shape Round, flat
Firmness Very good
Cracking No
Skin colour Dark red
Size A
Organoleptic qualities Very good, sweet, sub-acid



CANOPPE-cov (CN591-2)



Breeder - Owner PSB Producción Vegetal
CPVO patent CANOPPE-cov CEE N° 2020/2692

CHARACTERISTICS

Maturity +10 days Filoe-cov
Flowering time Filoe-cov period
Bloom set Very good
Production Very good
Tree Vigorous, half-straight

FRUIT

Shape Round, flat
Firmness Very good
Cracking No
Skin colour Dark red
Size A-AA
Organoleptic qualities Very good, sweet, sub-acid



COOKIE-cov (CN592-12)



Breeder - Owner PSB Producción Vegetal
CPVO patent COOKIE-cov CEE N° 2020/2697

CHARACTERISTICS

Maturity +15 days Filoe-cov
Flowering time Filoe-cov period
Bloom set Very good
Production Very good
Tree Vigorous, half-straight

FRUIT

Shape Round, flat
Firmness Very good
Cracking No
Skin colour Dark red
Size A-AA
Organoleptic qualities Very good, sweet, sub-acid



DIOSA-cov (BP171-22)



Breeder - Owner PSB Producción Vegetal
CPVO patent DIOSA-cov CEE N° 2020/2698

CHARACTERISTICS

Maturity -15 days Filoe-cov
Flowering time Filoe-cov period
Bloom set Very good
Production Very good
Tree Vigorous, half-straight

FRUIT

Shape Round, flat
Firmness Very good
Cracking No
Skin colour Dark red
Size A-AA
Organoleptic qualities Very good, sweet, sub-acid



RUBIMANIA-cov (CN368-6)



Breeder - Owner PSB Producción Vegetal
CPVO patent RUBIMANIA-cov CEE N° 2020/2681

CHARACTERISTICS

Maturity -5 days Filoe-cov
Flowering time Filoe-cov period
Bloom set Very good
Production Very good
Tree Vigorous, half-straight

FRUIT

Shape Round, flat
Firmness Very good
Cracking No
Skin colour Dark red
Size A
Organoleptic qualities Very good, sweet, sub-acid





PLUM CALENDAR

APRIL			MAY			JUNE			JULY			AUGUST			SEPTEMBER								
20	25	30	5	10	15	20	25	30	5	10	15	20	25	30	5	10	15	20	25	30			
			APOLINA-cov	CR8-7								PALLATINA-cov	K321-75								CR45-4-cov		



Plum

APOLINA-cov (CR8-7) AF

Breeder - Owner PSB Producción Vegetal
CPVO patent APOLINA-cov CEE N° 2019/2725

CHARACTERISTICS

Maturity Extra-early, -10 days Pioneer
Flowering time Extra-early, -10 days Pioneer
Bloom set Very good
Production Very good
Tree Vigorous, half-open
Self-fertile No, pollinators: Pioneer, CR7-53-cov

FRUIT

Shape Round, flat
Firmness Very good
Cracking No
Skin colour Very dark red. Cream white flesh
Size AAA
Organoleptic qualities Very good, juicy, aromatic



PALLATINA-cov (K321-75) AF

Breeder - Owner PSB Producción Vegetal
CPVO patent PALLATINA-cov CEE N° 2020/2645

CHARACTERISTICS

Maturity -10 days Santa Rosa®
Flowering time Santa Rosa®
Bloom set Very good
Production Very good
Tree Vigorous, half-open
Self-fertile No, pollinator: CR45-4-cov

FRUIT

Shape Round
Firmness Very good
Cracking No
Skin colour Pink, red flesh
Size A-AA
Organoleptic qualities Very good, sweet, aromatic



CR45-4-cov AF

Breeder - Owner PSB Producción Vegetal
CPVO patent CR45-4-cov

CHARACTERISTICS

Maturity +20 days Pallatina-cov
Flowering time Santa Rosa® period
Bloom set Very good
Production Very good
Tree Medium vigor, half-open
Self-fertile No, pollinator: Pallatina-cov

FRUIT

Shape Round
Firmness Very good. Holds very well on the tree
Cracking No
Skin colour Violet-black. Yellow flesh
Size A-AA
Organoleptic qualities Very sweet and very aromatic





PSB Producción Vegetal

BUFFAT'S GENETICS



f in 

P. (+34) 868 08 14 19

comerciales@psbproduccionvegetal.com

psbproduccionvegetal.com

